

KEYTROLLER

Product Line

www.keytroller.com

Access-Monitoring-Speed Controls
Wireless Hour Meters-Video Drive Cameras
High Accuracy Weighing Systems for Forklifts



 **MODEX 2012**
SOLUTIONS THAT MOVE SUPPLY CHAINS
GEORGIA WORLD CONGRESS CENTER
ATLANTA | FEBRUARY 6-8
www.MODEXShow.com

Booth: #912





Overload Sensing-Maintenance Scheduling +Training-Checklist Automation



Event Log Data
Graphs + Reports
Wirelessly
Transmitted

Control Access - Abusive Operators - Speeding + Impact Sensing



KEYTRROLLER 601/602

COLOR LCD



Access-Monitoring System for Large Fleets

KEYLESS IGNITION- **START-STOP** vehicle from keypad with code/card-- **NO MORE KEYS!!**

TRAINED OPERATORS ONLY-Operators code/card start **ONLY** vehicles they are trained on.

AUTOMATE CHECKLIST-Programmable electronic OSHA checklist--electronic log in SQL

RFID CARD ENABLING-Company RFID card enables the device (HID or standard type).

SCHEDULE MAINTENANCE-By date or hour meter reading-- warns on display.

SCHEDULE TRAINING-Code/card expiration + warning on display if within 30 days of training

IMPACT SENSING-Operators accountable for reckless driving-- reduce damage by 50+%.

SPEED SENSING-Speedometer warns operators of speeding, sets off alarm and logs event.

IGNITION SHUTDOWN-Programmable — after abusive shock event or other aux input.

OVERLOAD SENSING- Optional hydraulic sensor warns of overload.

ENGINE MONITORING-Watches engine oil pressure + temp— auto engine shutdown.

DATA EVALUATION-Filtered, graphed and exported to evaluate driver/vehicle performance.

E-MAIL-Automatic e-mail chosen events (like failed checklists, impact events, etc)

WiFi WIRELESS-Connects automatically- extracts data to SQL db, **NO WIRELESS COSTS!**

TEXT MESSAGING-Host PC sends text messages to display of individual operators or fleet!

REPORTS & GRAPHING-Evaluate usage trends and operator performance.

LOADED OR UNLOADED?-Optional hydraulic sensor monitors loaded condition-time w/ load.



LEASE a LCD601

\$69.40/mo for 36 mo — \$1 purchase option

\$54.30/mo for 48 mo — \$1 purchase option

Call to request your free demo kit!!!



New Generation KEYPATROLLER Software

In addition to event log data from your KEYTROLLER device, new generation KEYPATROLLER software provides you valuable data to fully manage your drivers and equipment---all in one software program and data base



NEW: Driver Management Section

Each Driver:

Picture—Name, address, phone, email, SS#, health issues

Driver training:

Trainer's name and company, when trained, cost, training due date, vehicles operator is trained to drive

Supervision:

Supervisor, when hired—hr \$ wage, current hr \$ wage, training due date,

Infractions:

Record keeping for infractions + reprimands for operator backed up by data from logged events.

Quick look:

Open operator's page, see quick graphical look at usage info like: total time on vehicle vs total time available



NEW: Vehicle Management Section

Each Forklift:

Picture—Make/Manufacturer, Model, Serial number, Model Year, attachments, battery information

Acquisition Cost and Supplier:

When purchased + price, new/used, warranty period-expiration, dealer contact info, service-sales manager

Maintenance Costs:

Allows inputs monthly maintenance costs and downtime information. Graphs show maintenance cost trends

Checklist Failures:

Chronological failed checklists. Allows mechanics and management to recognize maintenance trends

Damage and abuse:

Info on damage incident, driver, cost to repair, date, circumstances

Quick look:

Open vehicle page, see quick graphical look at usage info like: total time vehicle used vs total time available



Embedded internal 802.11 WiFi radio

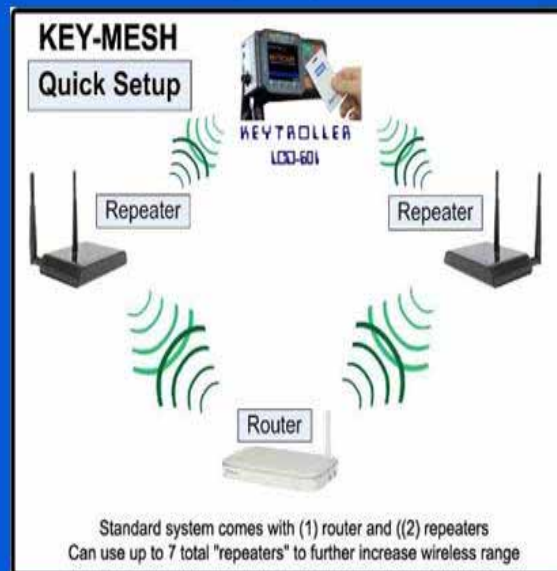
Embedded WiFi radio in 601—standard!

Use your existing WiFi network
Set encryption, SSID and IP addresses

OR

Optional KEY-MESH “hot spot” zone system

- Very easy to set up—just plug in each component into 110VAC outlet—NO WIRING!
- When vehicle is in “hot spot” zone, device communicates
- It's recommended that the “hot spot” is set up in a frequently traveled area like loading dock or battery charging/fueling area.
- If the vehicle is out of range, KEYTRROLLER will save any event data (up to 8000 events) and will download when in hot spot range.
- “HOT SPOT” WiFi zone of about 400'—500' is created



KEYTROLLER

105

Keypad Access-Monitoring System for Small / Midsized Fleets

- Keypad with code or RFID reader, dual relay module and shock memory module with RS232 serial port..
- Code or RFID card reader enables device.
- Start/stop vehicle (engine or electric) directly from keypad—NO KEYS!
- Simple PASS or FAIL automation of operator daily checklist (shutdown on FAIL press).
- Schedules maintenance by date or hour meter reading.
- Connections to sense: speed, seat switch, seat belt or low oil/high temperature.
- With optional speed sensor set: speed limit, grace period, alarm output with logged event.
- Optional indestructible metal piezo keypad for extremely tough applications.
- All user code in/out programming can be done directly on device keypad by programmer.



Programming and downloading methods:

- Direct computer connection at RS232 serial port.
- CYBERWIRE wireless radios (2.4 ghz Zigbee, 802.11 WiFi, or Bluetooth radio options)



START-SMART

**Simple Keypad Access & Monitoring Ignition System
Heavy Duty Weatherproof
Designed for Tough Outdoor**



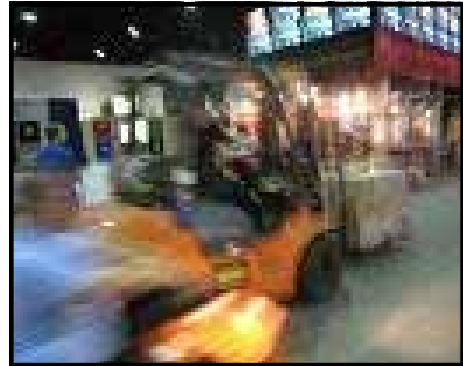
- Keyless keypad ignition
- Easy installation to any make or model vehicle-
to ignition switch & power
- Code or HID-RFID card enabling
- Small profile design-fits to any dash with NO exposed cables
- Auxiliary inputs for low oil, high temp, seat/seat belt switch, etc
- Programmer/supervisor can lock out all operators & re-enable
- Two Connections: 1-seat switch 2-aux input (typically seat belt, low oil, high temperature)
- All events are time and date stamped, and can be downloaded from USB port



SPEED-SAVER

Automatic Top Speed Controller for IC Vehicles with Conventional Accelerator Cables

- Controls vehicle top speed without affecting engine RPM at low travel speed
- Does NOT affect vehicle 's acceleration or hydraulic lifting capabilities



SPEED-SAVER EL

Automatic Top Speed Controller for IC Engines with Electronic "Fly by Wire" Accelerators

- Controls top speed and "slewing" acceleration rate electronically.



TIRE-SAVER

Tire and Transmission Abuse Prevention Device

- Increases tire life by up to 400%
- Prevents wheel spinning-reduces tire marks
- Takes responsibility for abusive directional changes away from the operator
- NO affect on vehicle acceleration or hydraulic lifting abilities
- Enhances site safety-drivers are forced to break and slow down before changing directions
- Installs in the field on any make or model gas, LPG or diesel powered vehicles with electrically selectable transmissions



CYBERWATCH

Cellular GPS Hour Meter

The affordable way to "watch" your equipment; location, usage, anti-theft, alarms and fuel.



Data received daily---All machines in your fleet viewed on your secured web portal!

- Engine hours---ignition -- past 24 hours
- # of time engine started -- past 24 hours
- Hour meter #2 (typically idle time) past 24 hours
- Vehicle location at time of daily data transmission

Website review:

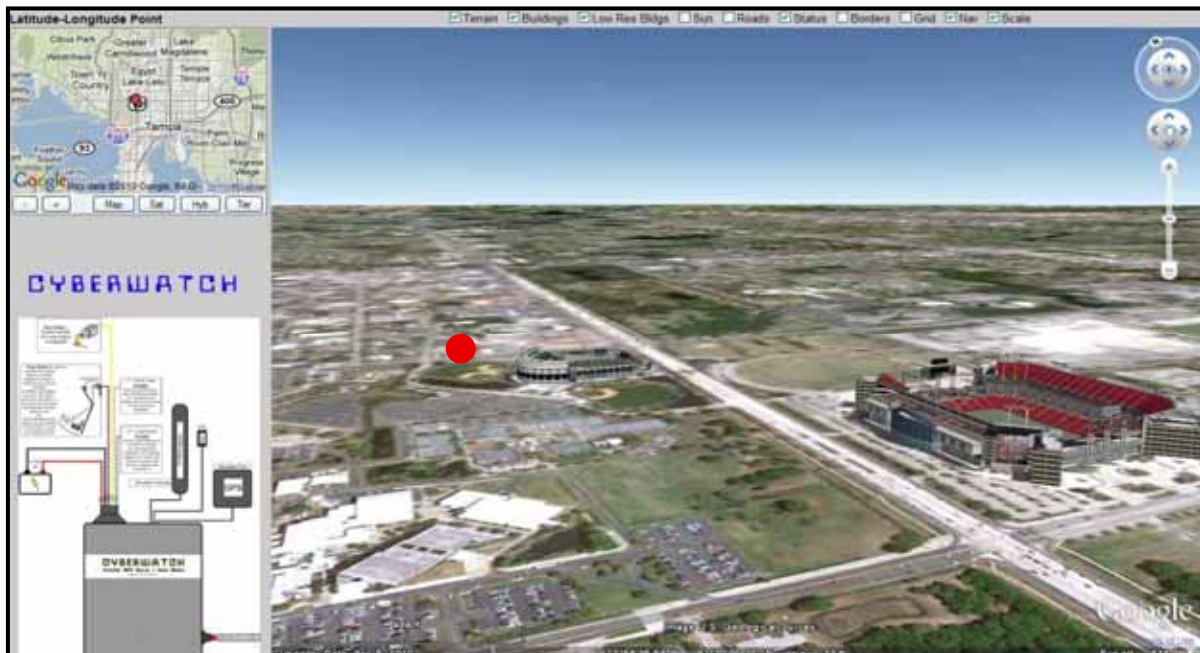
Graph of engine on and idle time ---daily---weekly---monthly
Maintenance scheduling by hours----% of time until maint due
Current location of vehicle — Historical location of vehicle

Watch your equipment for under \$20 per month!

\$24.30/mo for 36 mo \$1 purchase option

\$19/mo for 48 mo \$1 purchase option

(includes 3 years of wireless costs)



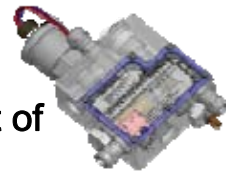
VANGUARD



High Accuracy Hydraulic Bypass Forklift Scale

**Most accurate hydraulic scale on the market!
Amazing accuracy-within 10# in a 5000# load!**

- Nearly as accurate as load cell scales costing 300% more!
- Can not damage this hydraulic scale in abusive applications
- Bypass samples hundreds of pressure readings, improving accuracy
- Logs up to 99 events and up to 99 different channels (different customers, trailers, products, etc.)
- LCD indicates: channel number, load number, weight of load, total of channel
- RS232 serial port can connect to optional Bluetooth radio to export data
- Bluetooth printers available in 2 " receipt and 3 " labels
- Data can be exported to PC for easy and accurate load weight addition
- Intuitive display provides for an accurate and easy set up and calibration
- LCD display in cab for easy viewing, weighs in Lbs or Kgs
- Gross and net weighing, manual or automatic tare



WEIGH-ALERT

Hydraulic Overload Warning + Status Device

- LCD display shows % capacity of load on forks
- Overload logging capability
- Increases forklift safety by warning operator as weight approaches unsafe overload condition
- Increases loading safety in yard and/or warehouse
- Maintains lifting capacity and driver visibility
- Requires NO periodic re-calibration or servicing
- Unique bracket enables positioning for easy view by operator
- Beeping audible alarm at 90% of full load, continuous alarm at 100%



WEIGHTROLLER

Hydraulic Scale with Status + Overload Warning

- Economical hydraulic scale fits to any forklift
- Accuracy to within 2% of lifting capacity
- Displays load weight and % of full capacity
- Unlike load cell scales---can not be damaged
- Requires NO periodic re-calibration or servicing
- No lost lifting capacity or reduced driver visibility
- Displays load weight in Lbs or Kgs
- Enables check-weighing of incoming and outgoing goods
- 100+ model has totalization for running total of all loads
- Same overload warning feature as Weigh-Alert device
- Waterproof enclosure sealed to IP67 for outdoor usage



The Company

Keytroller, LLC." designs, manufactures and supplies a full line of electronic safety devices designed for forklifts, construction equipment, aerial lifts, personal carriers, boats and hazardous transport trucks. Solutions our devices solve include: RFID—code—biometric access, monitoring, checklist automation, impact and speed sensing and control, directional shift controls, anti theft wireless relay systems, digital video recorders with GPS, cellular hour meters and high accuracy weigh scales. Originally established in 1988, Keytroller, LLC is headquartered in Tampa, FL and enjoys relationships with over 500 North American equipment dealers (aftermarket) many OEM vehicle manufacturers (installed as original equipment) and importers in England, Europe, Australia and Southeast Asia.

Industrial Awards



1999 Keytroller device®
1st place



2001 Speedtroller®
1st place



2003 Keytroller LCD®
Finalist



2005 Keytroller LCD®
Finalist



2011 Keytroller LCD®
Finalist

Our Customers

Currently many Fortune 500 companies throughout North America who own & operate significant forklift & construction equipment fleets are users of our safety vehicle monitoring devices. These KEYTROLLER® users include manufacturers, food processors, freezer companies, stevedoring docks, wholesale & retail distributors & public warehousing facilities. All users of our devices have experienced significant reductions in forklift & equipment damage due to negligent or untrained operators. Most multi plant operations have recommended the Keytroller® units to their sister plants because of the great return on investment observed almost immediately after installation of the safety devices.



Distributed by:

www.keytroller.com
Phone: 813-877-4500
sales@keytroller.com

